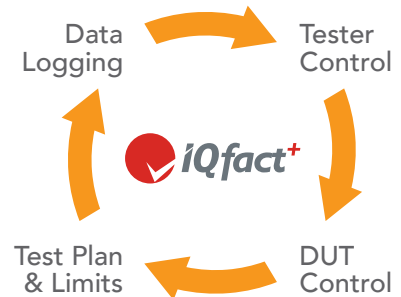


# IQfact+™ Calibration & Verification Test Automation

IQfact+ is a turnkey, chipset-specific wireless test solution, enabling thorough design verification and rapid volume manufacturing with minimal engineering effort. Test automation development is often a lengthy process, requiring intimate knowledge of tester and DUT control and writing your own test software. With IQfact+, you can focus on other aspects of product development and accelerate the time to market.

IQfact+ is a pre-validated calibration<sup>1</sup> and verification software solution that optimizes LitePoint connectivity testers for the highest throughput. To facilitate accurate test synchronization, IQfact+ controls both the LitePoint tester and the DUTs. In addition, each IQfact+ is tailored to provide the best test efficiency for a specific chipset. IQfact+ uses a chipset's non-signaling mode, which is speed-enhanced for production testing, instead of the signaling mode, which communicates with the DUT through normal protocol stack and requires time-consuming hand-shaking steps.

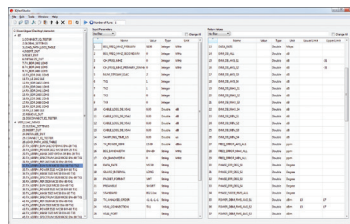
IQfact+ encompasses a growing library of over 300 chipsets and supports all key wireless connectivity technologies such as Wi-Fi, Bluetooth, ZigBee, Wi-SUN, FM, GPS, and NFC. IQfact+ is developed and supported by a dedicated team of expert LitePoint engineers, ensuring the performance optimization for the latest chipsets as well compatibility with legacy ones.



LitePoint, the industry's #1 provider of connectivity test solutions, has a long history of working closely with major chipset makers, engaging with them from the earliest stages of chipset development.



Manufacturing test operator interface



Easy-to-use test flow editor

### IQfact+ Solution Highlights

- Integrated DUT control
- Chipset calibration algorithms<sup>1</sup>
- Complete LitePoint tester control
- Data logging support for data archive and analysis
- Test plan development with an intuitive user interface
- Easy-to-use manufacturing test operator interface, supporting multi-DUT operations

Compared to traditional test automation development which may take weeks or even months, IQfact+ can be deployed in hours. This allows your test engineering resources to focus on product quality, not software development. While each IQfact+ solution is an out-of-the-box calibration<sup>1</sup> and verification solution for a chipset reference design, it can be customized to support a specific end-product implementation. IQfact+ can be used for both device characterization and high volume production, which ensures a smooth transition from the design to manufacturing phases. IQfact+ is designed specifically for the LitePoint tester architecture, which enables the fastest test throughput. Reducing test time and engineering effort translates into cost savings and faster time to market, and IQfact+ ensures they come with the highest product quality. With IQfact+, you can take advantage of LitePoint's tried-and-true wireless connectivity test technologies and deploy reliable and efficient test solutions in a fraction of the time.

## Features

**Ready-to-Go Solutions:** Thoroughly tested on chipset reference designs and verified with key chipset companies. Reduce significant engineering development cycles without sacrificing quality.

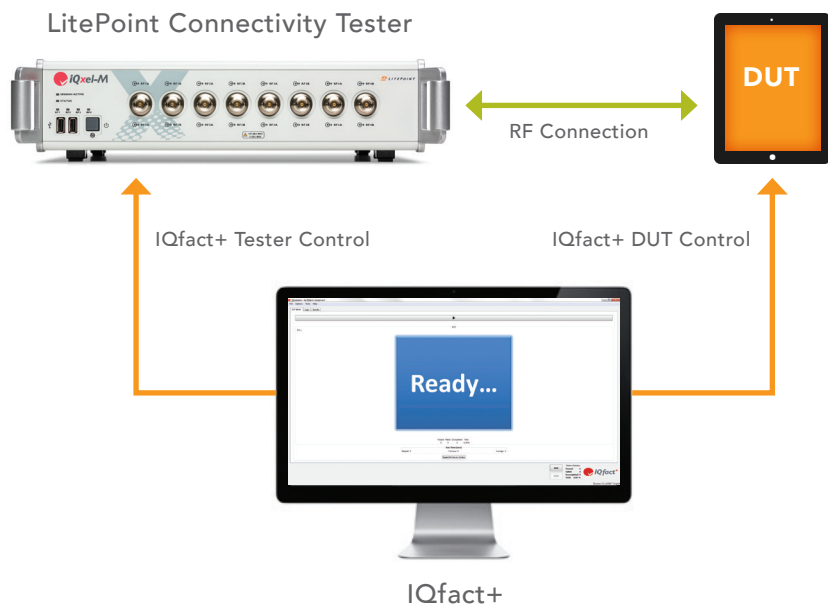
**Optimized Performance:** Close cooperation with major wireless chipset makers ensures that the test and calibration routines are uniquely optimized to reduce time and maximize throughput.

**User Configurable:** Test Lists, conditions and limits, and more are fully configurable from the easy-to-use test flow editor.

**Volume Manufacturing Ready:** IQfact+ can be run from IQoperator, an intuitive manufacturing test operator interface. Or, easily integrate IQfact+ into your own test program as a command line tool or by using the flexible IQfact+ API.

**Built-In Data Logging:** The IQfact+ log file is in CSV format, natively compatible with IQramp, a LitePoint data analysis tool, which enables rapid graphical and interactive data analysis.

**Worldwide Support:** Fully supported by local LitePoint personnel, often on-site, at key manufacturers worldwide.



## Minimum System Requirements

- Intel® i3 Processor (or equivalent)
- Supported Operating Systems: Windows XP/7
- 2 GB RAM (4 GB recommended)
- 2 GB HDD space

## Options

IQfact+ is compatible with all LitePoint connectivity testers<sup>2</sup>. Available as a single license, for an individual LitePoint tester, or a site license, which covers all the LitePoint connectivity testers you own.

<sup>1</sup> Where applicable, based on chipset company calibration requirements.

<sup>2</sup> Current chipset IQfact+ solutions are compatible with all IQxel testers. Contact LitePoint to confirm compatibility of legacy chipsets, IQ201X testers, and zSeries testers.